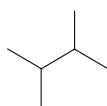


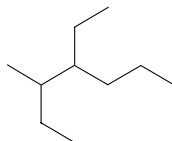
Quiz #2

February 18th, 2008

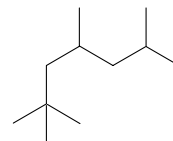
1) Name the following molecules. (3 points)



2,3-Dimethyl-butane



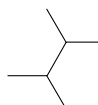
4-Ethyl-3-methyl-heptane



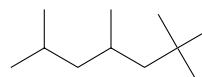
2,2,4,6-Tetramethyl-heptane

2) Provide the structure of the molecules (2 points).

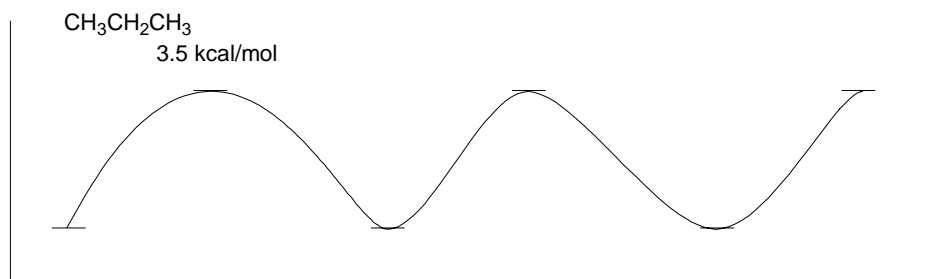
2,3-Dimethyl-butane



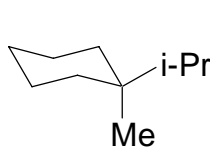
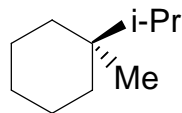
2,2,4,6-Tetramethyl-heptane



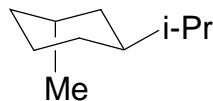
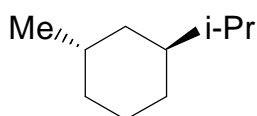
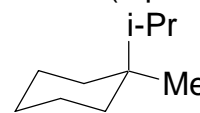
3) Draw the energetic profile of propane C-C bond rotation. (4 points)



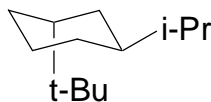
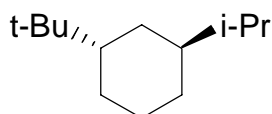
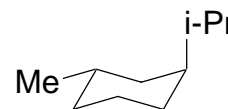
4) Draw the most stable chair conformation of the following molecules. Give the energy difference between the favored chair and the unfavored chair in Kcal/mol (2 points)



0.9 kcal/mol



0.9 kcal/mol



4.3 kcal/mol

