

Concepts of the 12-tone System - Cheat Sheet

Prime form (the original):



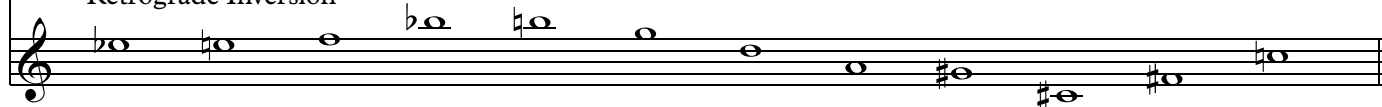
Inversion



Retrograde



Retrograde Inversion



A 12-tone row can't repeat a pitch until all the other chromatic pitches have been used...this means that no one pitch is weighted more heavily than any other (in theory).

A composer can invert the row (flip it on the horizontal axis), use the retrograde (play it backwards), and the retrograde inversion (backwards and upside down). They can also transpose any of these forms.