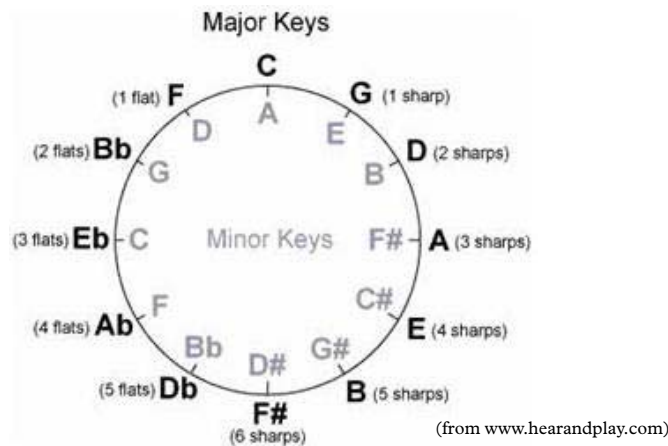
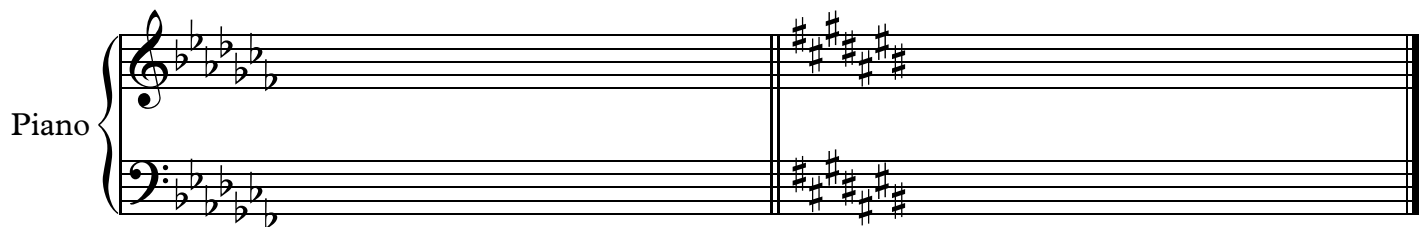


# Key Signatures - Cheat Sheet



Use this circle of fifths to tell you how many sharps or flats in a key. The circle also tells you the order of the sharps (starting with F#) and the flats (starting with Bb).

Mnemonic Device - Father Christmas Got Dad An Electric Blanket



Remember: to get the key with flats, look to the second to last flat - that will tell you the name of the key

With sharps, look at the last sharp and think up 1 half step - that will be the name of the key.

Relative minor = shares the same key signature, not the tonic.  
Parallel minor = shares the same tonic, not key signature.

To find parallel minor from the major key - add 3 flats.  
To find the relative minor, think of the 6th scale degree of the major scale (i.e. in C Major, A is the 6th scale degree, so it's the tonic of the relative minor)