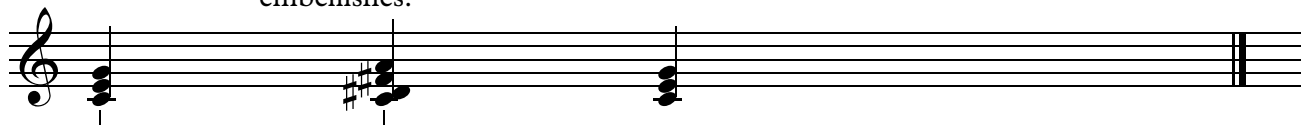


Common Tone Diminished 7th Chords - Cheat Sheet

A Common Tone Diminished 7th Chord doesn't function like a traditional vii° .
Instead, it simply prolongs the chord

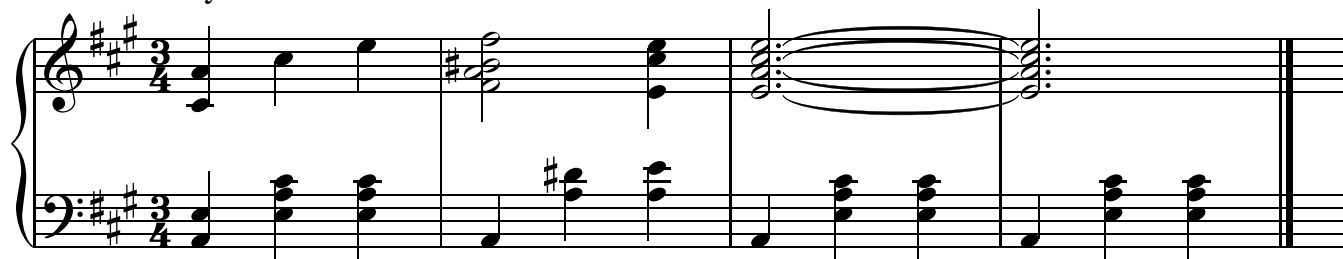
This chord could be spelled a lot of different ways, but it's based around the root of the chord it embellishes.



C serves as the common tone between these two chords.

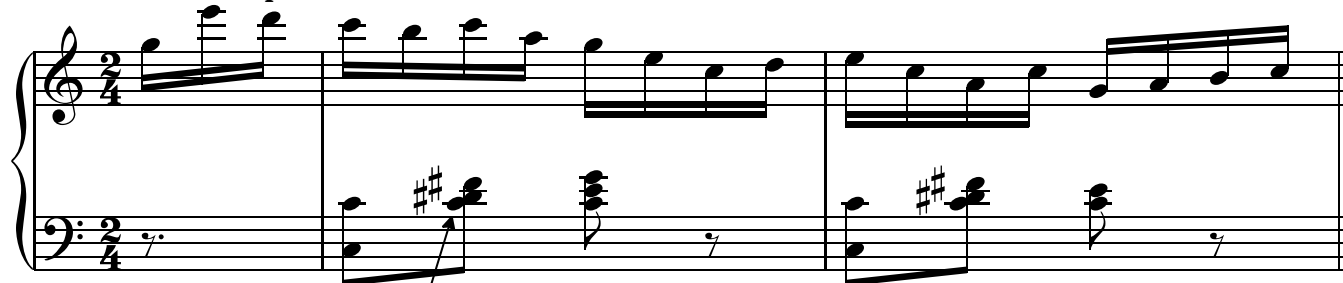
It generally decorates I or V.

Tchaikovsky: Waltz of the Flowers.



A: I CT^{o7} I
Common tone

Mendelssohn: Perpetuum Mobile.



C: I CT^{o7} I
Common tone